

Message from Mrs Butt

Dear Parents and Carers,

As we journey further into this term, I continue to grow in both knowledge and appreciation of our wonderful school community. Each week offers new opportunities for me to witness the warmth, dedication, and spirit that make our school such a special place. It has been a joy to welcome so many visitors recently—families, professionals, and members of our wider community—each one commenting on the calm, nurturing atmosphere that flows through our corridors. I am reminded daily of the scripture, “Encourage one another and build each other up” (1 Thessalonians 5:11), which feels especially fitting for what I see here.

I would like to extend my sincere thanks to the many parents who attended our Year 6 SATs information meeting. Your engagement, thoughtful questions, and commitment to supporting your children at this important stage reflect the strength of our partnership. The session was a real success, and we hope it provided clarity and reassurance as we continue preparing our pupils with confidence and care.

The uppersite children had an incredible time at We The Curious in Bristol this week. I have heard such a range of excitement, awe and wonder surrounding the trip. What an incredible experience for our children. Thank you Mrs Pocock for organising and to our parent helpers for making these excursions possible!

This week we also benefited greatly from our Online Safety focus sessions led by Richard Pomfrett. His expertise, energy, and practical guidance have helped deepen our whole-school understanding of how to keep children safe in an increasingly digital world. The workshops offered valuable insights for pupils and staff alike, and I know many families found the parent session particularly enlightening.

We are also blessed to see our new staff settling into school life beautifully. Their enthusiasm, compassion, and willingness to embrace our Christian vision have already enriched our community. It is a privilege to watch them building relationships, bringing fresh perspectives, and becoming part of the loving fabric of our school.

As we move forward together, please know how grateful I am for your continued support.

Wishing you all a restful weekend,
Mrs Butt

Believe to achieve!

‘Roots will grow down into God’s love to keep us strong.’ – EPH 3:17

CELEBRATING SUCCESS

The following children have been recognised for their achievements in celebration assembly in the last two weeks. **Well done everyone!**



STAR OF THE WEEK

Tilly, Lily, Tansy, Lachlan, George, Katrina, Molly G, Molly M, Noah, Ella, Hattie, Walter, Poppy D, Edward C, Freya, Katrina, Aria, Monty, CC and Emily.



ATTENDANCE

Beech Class 97%
Birch Class 99.33%

Elm Class 98.75%
Rowan Class 98.21%

PLEASE!

GOOD MANNERS



Edward P, Reuben, Xanthe, Vienna-Rose, Jack, Finlay, Maille, Kingsley, Jack, Rowan and Frank.



PEN LICENCE

Darcie,



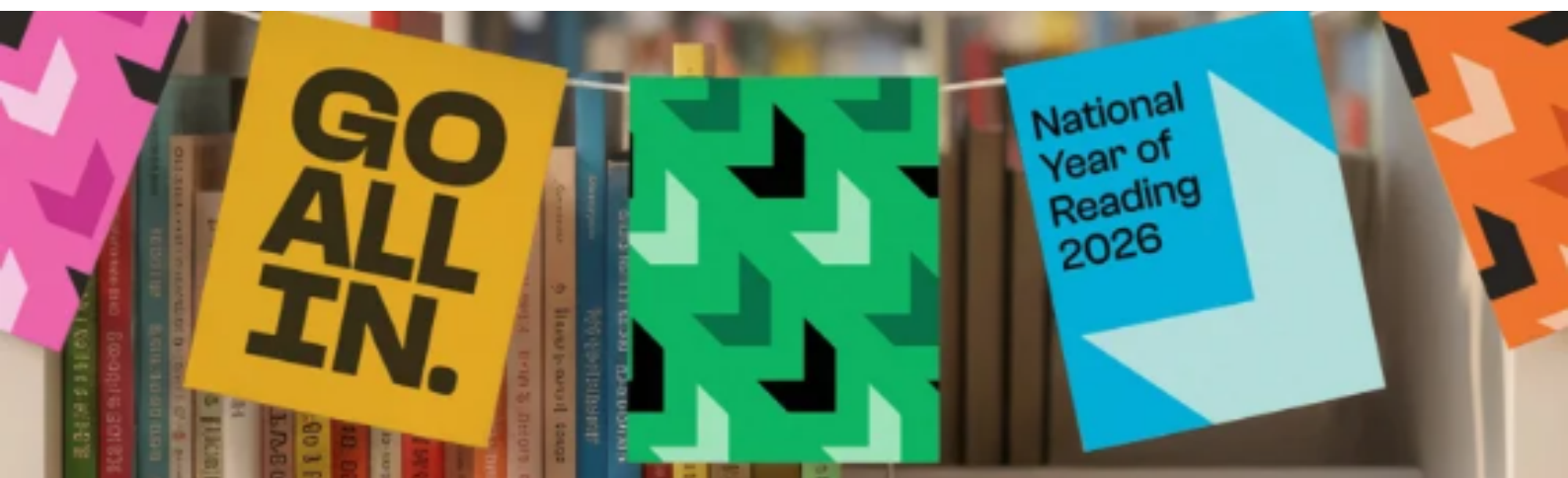
GREAT READING

50 Reads - Tansy, Reuben
75 Reads - Anya, Seth, Elijah
100 Reads - Carina
125 Reads - Charlie, Leo, Lachlan
150 Reads - Xanthe



VALUES

Eva.



SPOTLIGHT ON

Breaktime Snacks



Snacks welcomed
in school



Paper sandwich bags or plastic pots are good for the environment and mean you can buy snacks in bulk to save money

Please leave
these at home



Lunchbox Balance



Starchy Carbohydrates
For energy, vitamins, minerals and fibre



Dairy
For strong bones and teeth



Fruit
For vitamins, minerals and fibre

Pack a healthy, balanced lunchbox
Include one item from each food group box in your lunchbox. Limit choices from the 'foods high in salt, fat and sugar' box to no more than one item. If you can avoid them altogether, even better!



Vegetables
For vitamins, minerals and fibre



Foods high in salt, fat and sugar
Try to limit intake of these foods as they are bad for your hearts, teeth and weight. They are fine to be eaten as part of a balanced diet. There is no such thing as a 'bad food', just a 'bad diet'.



Protein
For growth and repair

SEND INFORMATION



Hampshire Child and Adolescent
Mental Health Services

New Strategy Based Films for parents/carers and Professionals New for 2026

**What is Emotionally
Based School
Avoidance**



**Risk factors for
Emotionally Based
School Avoidance**



**Tips for Emotionally
Based School
Avoidance**



**Thriving with
ADHD in school**



**ADHD
and sleep**



**Reframing
ADHD**



Girls and ADHD



**ADHD – order out of
chaos**



**Growing older and
changing ADHD
symptoms**



**The importance of
sleep**



**Tips to support
sleep optimisation**



To watch the
videos, scan these
QR codes

SENDCO UPDATE

Hello,

As part of my remit as SENDCo, I also look after any disadvantaged learners we may have in school. Young Carers often go under the radar, and may not be aware that they are a young carer.

A young carer is a child under 18 who regularly cares for a family member with illness, disability or mental health needs. Caring can impact attendance, wellbeing and learning. Schools should identify them early, make reasonable adjustments (including emotional support), provide a key adult, and refer to outside agencies such as young carers services and local authority assessments.

If your child is a Young Carer please speak to myself or Mrs Butt as we can offer support to ensure they are well supported in school.

Have a lovely weekend,
Mrs Pocock



WORLD BOOK DAY
Thursday 5th March 2026

To celebrate World Book Day 2026, children are invited to come to school dressed in their pyjamas for a day of snuggly activities and cosy reading! They are also invited to bring their favourite book along for the occasion.

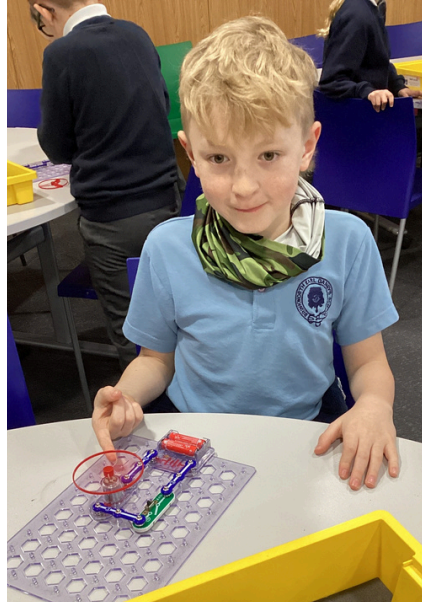
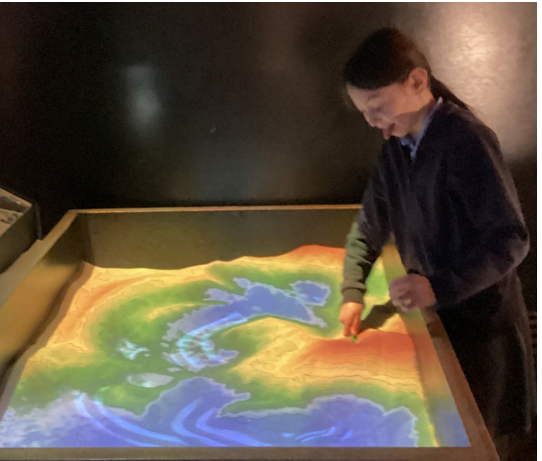
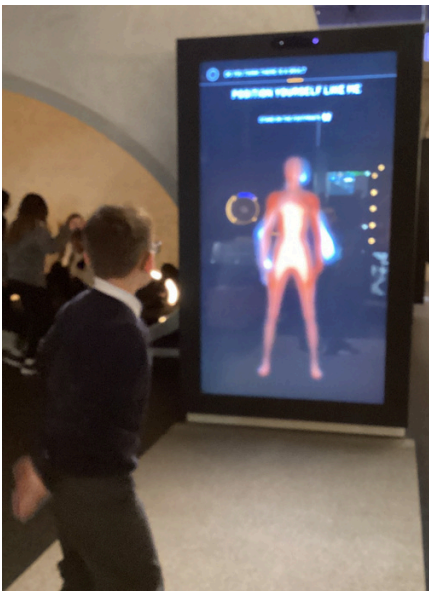


In order to inspire the children's writing we are also being visited by author, Tom Allen, on Tuesday 24th February. Further details will follow.



WE THE CURIOUS

A great time was had on Wednesday when Upper Site children visited We The Curious in Bristol. Every child had the opportunity to attend a themed workshop based on their science curriculum, explore the many activities (step inside a rainbow, smell the planet Jupiter, create giant bubbles, see how the animation Wallace and Gromit is made...) and experience the 3D planetarium show. We the Curious complimented us on the excellent behaviour of our children and it was a happy and successful visit. Thank you to all our staff and volunteers who made the day possible.





Brinkworth Earl Danby's School Association



bedsacontact@gmail.com

FUNDRAISING



EASY FUNDRAISING

Sign up, buy online - from your weekly shop to your annual holiday - and raise free money for BEDSA. And it won't cost you a penny!



SCHOOL LOTTERY

Sign up to purchase weekly lottery tickets, boost school funds, win cash prizes. At least one winning ticket per school per week!



STIKINS

Don't forget to order new name labels through Stikins using our code 35318

This February, easyfundraising are offering BEDSA a £2 bonus for each person that signs up with them on the app.

Just head to the App store or Google Play, download the easyfundraising app and sign up. With over 8000 brands, its simple to help raise money for Brinkworth Earl Danby's School Association for FREE!

2025

A year of raising

This is what one supporter could raise for Brinkworth Earl Danby's School Asso... in a year by shopping through easyfundraising.

Month	Goal	Brand
January	Book a holiday £50* donation	TUI
March	Upgrade TV & broadband package Up to a £45* donation	BT
May	Upgrade a mobile phone Up to a £47.50* donation	Carphone Warehouse
July	Get school uniform & shoes £5* donation	George
September	Buy car insurance Up to a £17.50* donation	MONEYSUPERMARKET
November	Buy a Christmas tree £4.50* donation	B&Q
December	A year of weekly food shops £26* donation	TESCO
April	Buy home insurance Up to a £17.50* donation	GO.COMPARE
June	Buy pet insurance Up to a £27.50* donation	LIVE LIVERPOOL VICTORIA
August	Day out with the family Up to a £30* donation	trainline
October	Get a new fridge freezer £10* donation	Argos

Total £280.50

*Donation rates change from time to time. The amounts above were correct as of 17/12/2025.

Did you know?

Without BEDSA's support, the trip to We The Curious this week would have cost over £30, instead of £15.

DATES FOR THE YEAR

Updates in red. Install the School News app to receive news updates, details on our website [here](#).

PE DAYS	Beech - Reception	Mondays & Thursdays
	Beech - Year 1	Mondays & Wednesdays
	Elm	Tuesdays & Wednesdays
	Birch	Tuesdays & Thursdays
	Rowan	Thursdays (swimming) & Fridays
	Willow	Mondays & Thursdays

TERM 3

Fri 6 Feb	BEDSA Disco		LS Hall 3:30-4:30 LS 4:45-5:45 US
Wed 11 Feb	Rowan Class Assembly	Upper Site	9:10am (was 26 Mar)
Fri 13 Feb	End of Term 3		

TERM 4

Mon 23 Feb	Start of Term 4		
Tue 24 Feb	NSU for T3 House Point Winners		
Mon 2 Mar	Book Fair		
Thu 5 Mar	World Book Day		
Wed 18 Mar	Y4 Residential	Braeside	3 days, 2 nights
Thu 19 Mar	Parent Forum 4	Lower Site	
Fri 20 Mar	Red Nose Day		
Tue 24 Mar	Parents Eve	Upper Site	
Wed 25 Mar	Project 5k Final Event	Upper Site	3:30-4:15 on US grounds
Thu 26 Mar	Willow Class Assembly	Upper Site	9:10am (was 12 Feb)
Thu 26 Mar	Parents Eve	Upper Site	
Fri 27 Mar	Whole School - Easter	Upper Site	Includes church Easter service
Fri 27 Mar	End of Term 4		

DATES FOR THE YEAR

TERM 5

Mon 13 Apr	Start of Term 5		
Tue 14 Apr	NSU for T4 House Point Winners		
Thu 30 Apr	SEN Coffee Meetup	Lower Site	Focus - ASD
Mon 4 May	Bank Holiday		School Closed
Thu 7 May	Parent Forum 5	Lower Site	
Mon 11 May	Y6 SATs Start		4 days
Wed 20 May	Elm Class Assembly	Lower Site	9:10am (was 11 Feb)
Thu 21 May	Birch Class Assembly	Upper Site	9:10am
Fri 22 May	End of Term 5		

TERM 6

Mon 1 Jun	TD Day		No children in school
Tue 2 Jun	Start of Term 6		
Tue 2 Jun	NSU for T5 House Point Winners		
Wed 3 Jun	Class School Photos		
Fri 5 Jun	Sports Day	Upper Site	1pm
Fri 12 Jun	Y6 Residential	Morfa Bay	4 days, 3 nights
Thu 18 Jun	Reception New Parents Info Eve		
Fri 19 Jun	Reserve Sports Day		
Thu 25 Jun	Parent Forum 6	Lower Site	
Wed 8 Jul	Beech Class Assembly	Lower Site	9:10am (was 20 May)
Thu 9 Jul	Shuffle Up/Transfer Day		
8 & 9 Jul	Malmesbury Year 6 Induction Day		
Mon 13 Jul	School Reports Out		
Mon 13 Jul	Y2 Second Transfer Day	Upper Site	
Wed 15 Jul	Willow Production	Lower Site	PM & Eve performances

DATES FOR THE YEAR

Fri 17 Jul	Leavers' Party	Upper Site	After school
Tue 21 Jul	Whole School - Leavers' Service	Upper Site	AM church service, Y6 Parents
Tue 21 Jul	End of Term 6		
Wed 22 Jul	TD Day		No children in school



COMMUNITY NEWS

[click images for links](#)

NEW YEAR - NEW START - NEW FUTURE

Looking to work in a school, that fits in around your family? Join Aspire Education Academy's Fully Funded (FREE) Education Support Course. Starting on Monday 2nd March!

6 Week Course

Online ONLY Education Support Course with LIVE webinars

1st webinar at 9:30am – 11:30am daily

2nd webinar at 12:30 - 2pm daily

3rd webinar at 4pm - 4:30pm daily Reflection and Support (this is an optional daily webinar)

Available in Levels 1, 2 & Level 3 progression. You'll receive guided support from our friendly tutors throughout the course of your choice. We run within school hours and ONLY in term time and not during half term/ end of term periods.

No previous experience required. Adult Education 19+. All you need is access to the internet and a laptop or tablet. Course cannot be completed on a mobile.



6 Week Course
Starting
Monday 2nd March

Online LIVE Webinars
Monday - Friday
9.30 - 11.30 & 12.30 - 2.00
Support Session 4.00 - 4.30

Fully Funded Adult Education 19+ Education Support Course

Levels 1, 2 & 3 Available
Accredited Awards &
Certificates in:
*Prepare to Work in Schools
*Wellbeing
*Safeguarding & Prevent
*Occupational Studies
*Understanding Challenging
Behaviours
*Principles of SEN

www.studysmartuk.online

You are invited

Family and Community Learning

Join us online to find out how our family skills courses help support children's wellbeing, confidence and learning.

Family Learning Information Session for parents and carers

Tuesday 24 February 4.30 - 5.15pm

Discover how our courses can help you promote wellbeing, strengthen communication, and feel more confident supporting your child's learning.



Scan qr code for bookings

Bookings through Eventbrite
Contact Family and Community Learning
01225 770478
familyandcommunitylearning@wiltshire.gov.uk

Wiltshire Council





COMMUNITY NEWS

click images for links



February Half Term Football Camp

5 Day Football Camp
Monday 16th - Friday 20th February

School years: Reception - Yr11
9.30am - 2.30pm (Drop off from 8.30am)
Only £19 per day! Discounts for siblings & WFA JPL Club Members

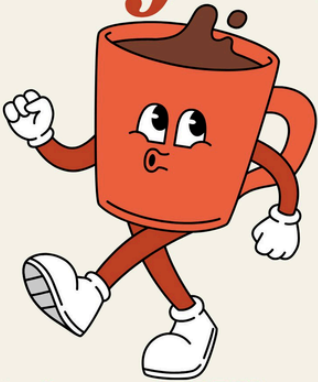
- Challenges
- Daily Tournaments
- Skills
- Fun



Gerard Buxton Sports Complex (3G)
Brinkworth Road, Royal Wootton Bassett, SN4 8DS




Village Cafe



at Brinkworth Village Hall

Every Tuesday
2pm - 4:30pm

Post Office open
1:30pm - 3:30pm

RAISING FUNDS FOR THE HALL



MISS JASMINE'S
SCHOOL OF DANCE

Come and join us!

Your first lesson is Free!

Based in Malmesbury and Hungerford, we specialise in Ballet, Modern, Tap, Contemporary, Musical Theatre. Fun, energetic classes for all ages!

Call or email us:
07507145540/

jasmine@missjasmindance.co.uk

Visit our website for more information on our classes!

<https://missjasmindance.co.uk/>



Easter

DANCE WORKSHOP

JOIN US!

9am-2pm
Cost:

£25 per child
Riverside Community Centre
Malmesbury

31st March
2026
20 places available so book now!

Come and join us for a day packed with dancing, acro, games, activities, and fun! Suitable for boys and girls ages 6-11 years - open to all, you don't have to be a pupil! For more details, please email us at jasmine@missjasmindance.co.uk or call us on 07507145540 to join us!



COMMUNITY NEWS

click images for links

Braeside Education Centre

February Half Term Activity Days! £45 per day

Adventure - Challenge - Fun

For ages: 8 – 12 years (Siblings up to 14 years)

Drop Off - 8:30am – 9:00am
Pick Up - 4:30pm – 5:00pm

Monday 16th – Mixed Activity Day
Archery, Life Line, Low Ropes, Orienteering

Tuesday 17th – Climbing Day
Climbing Wall, Zip-Wire, Abseiling, High Ropes

Wednesday 18th – Survival Day
Fire Lighting, Shelter Building, Survival Craft

Please book online by visiting www.braeside-education.co.uk/holiday-club

Contact us for more details; 01380 722637
info@braeside-education.co.uk

Braeside Education Centre

Activities will run in groups, in rotation, throughout the day.




JUNIOR STRINGS THURSDAYS ST MARYS, CHIPPENHAM

COME AND ENJOY MAKING MUSIC WITH OTHER MUSICIANS!

Our inspiring tutors will lead you through an exploration of different music from classical to pop to film music and beyond

Perform concerts in amazing venues

**3.45 - 4.45PM
JUNIOR STRINGS**



**TO SIGN UP OR FOR MORE INFO CONTACT:
INFO@WILTSHIREYOUNGMUSICIANS.ORG.UK**

Wiltshire Young Musicians

Helping young people make music since 1990

Calling all youngsters under 19 years




**No experience necessary
Learn from scratch!**

Pick up and play!

Instrument hire included

Highly qualified and inspirational tutors

Brass on Thursdays

Woodwind on Thursdays

Strings on Tuesdays



www.wiltshireyoungmusicians.org.uk | info@wiltshireyoungmusicians.org.uk



COMMUNITY NEWS

click images for links

WILTSHIRE YOUNG MUSICIANS
presents
MAGICAL CLASSICAL!
WORKSHOP & CONCERT

for Violin, Viola, Cello and Double Bass players
from beginner to Grade 2

SUNDAY **£12**
MARCH 22
WILTSHIRE MUSIC CENTRE

15.30 WORKSHOP
COME AND LEARN FANTASTIC MUSIC
WITH FRIENDLY TUTORS!
(PACKED TEA BEFORE THE FINAL PERFORMANCE)

17:00 CONCERT ALONGSIDE
WILTSHIRE YOUNG MUSICIANS
JUNIOR STRING ENSEMBLES!

TO SIGN UP OR FOR MORE INFO CONTACT:
INFO@WILTSHIREYOUNGMUSICIANS.ORG.UK

POP & ROCK
WORKSHOP
AND CONCERT

FOR BEGINNER - GRADE 2 WOODWIND,
BRASS & PERCUSSION PLAYERS

SUNDAY **£12**
MARCH 22
WILTSHIRE MUSIC CENTRE

11.30 WORKSHOP
COME AND LEARN ROCK & POP MUSIC
WITH FRIENDLY TUTORS!
(PACKED LUNCH BEFORE THE FINAL PERFORMANCE)

13:00 CONCERT ALONGSIDE
WILTSHIRE YOUNG MUSICIANS
JUNIOR WIND BANDS!

CONCERT TICKETS £10/£6 U-18S

TO SIGN UP OR FOR MORE INFO CONTACT:
INFO@WILTSHIREYOUNGMUSICIANS.ORG.UK
www.wiltshireyoungmusicians.org.uk

Triple P Family Transitions

Struggling With Co-Parenting? You're Not Alone.

Are you finding co-parenting challenging?
Can't agree on the decisions being made for your child?

Parenting after separation isn't easy — but you don't have to go through it alone.

Join our co-parenting programme and connect with other separated parents/carers on a similar journey.

This supportive programme is designed to help you navigate the challenges of shared parenting and will empower you to put your child's wellbeing first.

Call us for more information or to ask for a space on: 0800 970 4669 or use the code opposite to sign up directly.

<https://wiltshiretogether.org.uk/alltogether>



Spurgeons | Family Hub Wiltshire Council | All Together Supporting families in Wiltshire

Within My Reach

Time for Us

Would you like some support communicating as a couple?

Do you need help to understand each other and be better listeners to make positive changes in your relationship?

If so, then come along and join our group of like minded couples.

Call us for more information or to ask for a space on: 0800 970 4669 or use the code opposite to sign up directly.

<https://wiltshiretogether.org.uk/alltogether>



Spurgeons | Family Hub Wiltshire Council | All Together Supporting families in Wiltshire