

# NEWSLETTER

Believe to achieve!

'Roots will grow down into God's love to keep us strong.' – EPH 3:17

Term Value  
compassion

## Message from Mrs Butt

As we move into what is always one of the busiest and most exciting parts of the school year, it has already been a joy to see so many events, opportunities and celebrations beginning to take shape across the school.

One of the highlights on the horizon is, of course, the Year 6 production. Rehearsals are well underway and it is clear already that this will be something very special. The confidence, creativity and teamwork being shown by our pupils is wonderful to see, and I genuinely cannot wait for parents and families to experience the talents on show when it comes to performance week.

We are also counting down to the much-anticipated Year 6 residential next week. There is a real sense of excitement building! As ever, we are keeping a close eye on the weather—long after the sunshine (or showers!) of Sports Day—as we all know how important it is to pack suitably. We look forward to hearing all about the adventures when the children return.

I would also like to extend a sincere thank you to parents for your continued support, particularly in response to our requests for resources for outdoor play provision. The tyres, logs, pots, pans and digging tools you have generously contributed are proving incredibly popular. It has been fantastic to see how these additions are already shaping more creative, collaborative and positive playtimes for our children here at BEDs.

You will recently have received a consultation letter regarding proposed changes to the school day. I would encourage all parents to engage with this and share your views. Please be assured that this is not a final decision, but an opportunity to explore possible solutions. As a school, we must carefully balance statutory requirements for education with our professional responsibilities around staff working hours, financial sustainability, and the safety and wellbeing of everyone in our community. There are many factors to consider and a range of perspectives to listen to, and we welcome thoughtful, solution-focused feedback as we work towards the best possible outcome for all stakeholders. I will update you on responses to incoming questions in the coming weeks.

Looking back briefly, it was truly wonderful to come together for our School Games Day (Sports Day). Having all of our children and families on one site created such a positive and vibrant atmosphere. A special thank you goes to Mrs Broadhurst and Mr Cooper for their fantastic musical opening to the day—it set the tone perfectly—and to BEDSA for their ongoing support with refreshments and activities that added so much to the occasion. Thank you for donations of cakes and treats as well as your financial contributions on the day.

Our pupils have also been showing fantastic sporting spirit more broadly. Well done to those who took part in Thursday's dodgeball finals—the effort, teamwork and determination on display were excellent. It is always a pleasure to see our children representing the school so proudly, and we are looking forward to the upcoming netball and cricket events in the coming weeks. The dodgeball team finished 4<sup>th</sup> in the whole county, which is an amazing achievement! Again, thank you for parent help to support transport and supervision of the event.

Finally, as we move towards the end of term, please keep an eye out for upcoming information about Relationships and Sex Education (RSE). These lessons will be delivered in the final week of June, with content tailored appropriately to each year group, and we will ensure you are fully informed ahead of time.

Thank you, as always, for your continued support—it is what makes Brinkworth Earl Danby's such a strong and thriving community.

Warm regards,  
Mrs Butt  
Headteacher

# CELEBRATING SUCCESS

The following children have been recognised for their achievements in celebration assembly in the last two weeks. **Well done everyone!**



## STAR OF THE WEEK

Walter, Eli, Effie, Elsie, All of Birch class, Sefton, Isla D, Maille, Ella and Jensen



## ATTENDANCE

Elm Class - 87.92%  
Birch & Willow Class - 96.67%

Elm Class - 96.88%  
Rowan Class - 100%



## GOOD MANNERS



Louna, Donovan, Eliza, Leo B and Ollie T



## GREAT READING

Isla D and Eliza

# USEFUL INFORMATION



Please do follow our Facebook page **HERE** for details of community events and reminders of upcoming school events.

BEDSA can also be followed **HERE**.

Photos of school events will continue to be shared on Seesaw.

# Spotlight on school uniform

A smart uniform promotes identity and pride in our school. It prepares children for the expectations of uniform in secondary schools and in work places. Our uniform expectations are sensible and sustainable. We strive for inclusivity, comfort and practicality alongside being cost effective.

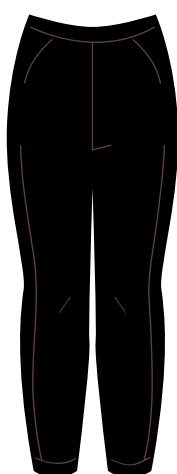
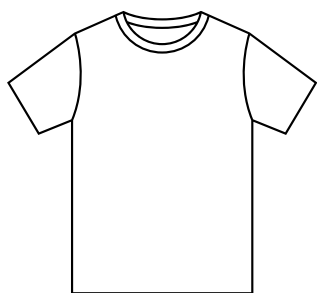
Please ensure that your child understands the expectation and support us by ensuring they wear their uniform daily.



# Spotlight on PE uniform

A smart uniform promotes identity and pride in our school. It prepares children for the expectations of uniform in secondary schools and in work places. Our uniform expectations are sensible and sustainable. We strive for inclusivity, comfort and practicality alongside being cost effective.

Please ensure that your child understands the expectation and support us by ensuring they wear the correct PE kit on their PE or club days.



# DATES FOR THE YEAR

Updates in red

## TERM 6

Thu 11 Jun	NSU & Jazzy Jars	<a href="https://www.brinkwortheardanbys.wilts.sch.uk/calendar/?calid=1&amp;pid=3&amp;viewid=1&amp;event=1129">https://www.brinkwortheardanbys.wilts.sch.uk/calendar/?calid=1&amp;pid=3&amp;viewid=1&amp;event=1129</a>
Fri 12 Jun	Y6 Residential to Morfa Bay	4 days, 3 nights
Thu 18 Jun	Big Teddy Takeover	<a href="https://www.brinkwortheardanbys.wilts.sch.uk/calendar/?calid=1&amp;pid=3&amp;viewid=1&amp;event=1126">https://www.brinkwortheardanbys.wilts.sch.uk/calendar/?calid=1&amp;pid=3&amp;viewid=1&amp;event=1126</a>
Thu 18 Jun	Reception New Parents Info Eve	
Thu 25 Jun	Parent Forum 6	6pm at Lower Site
Fri 26 Jun	LS Trip to Lower Moor	
Wed 8 Jul	Beech Class Assembly	9:10am at Lower Site
Thu 9 Jul	Shuffle Up/Transfer Day	
Mon 13 Jul	School Reports Out	
Mon 13 Jul	Y2 Second Transfer Day	At Upper Site
Wed 15 Jul	Willow Production	PM & Eve performances at Lower Site
Fri 17 Jul	Leavers' Party	After school
Tue 21 Jul	Whole School Leavers' Service	AM church service, Y6 Parents Pupils at Upper Site AM. <a href="https://www.brinkwortheardanbys.wilts.sch.uk/calendar/?calid=1&amp;pid=3&amp;viewid=1&amp;event=1094">https://www.brinkwortheardanbys.wilts.sch.uk/calendar/?calid=1&amp;pid=3&amp;viewid=1&amp;event=1094</a>
Tue 21 Jul	End of Term 6	
Wed 22 Jul	TD Day	No children in school